

SPINE PATIENT ADMISSION AND MANAGEMENT FLOWCHART IN COVID HOSPITALS

Any Spine patient requiring admission: OPD/Casualty

HISTORY+ CHECKLIST FOR COVID-19 SUSPICION^{1,2,3,4} + COVID CONSENT

Positive Suspicion

Negative Suspicion

Emergency Sx

Semiemergency Sx

Routine Sx / Observation

Emergency Sx

Semimergency Sx

Routine Sx / Observation

Take COVID sample, Operate in COVID OT with PPE, Get COVID result

Admit in COVID suspect area, take sample

Take COVID sample, Operate in COVID OT with PPE, Get COVID result

Admit in Non-COVID but suspect area, take sample

COVID-Positive

COVID-Positive

COVID-Negative

COVID-Positive

COVID-Positive

COVID-Negative

Shift to COVID ward/ICU

Shift to COVID ward/ICU-Sx
WAIT till COVID negative

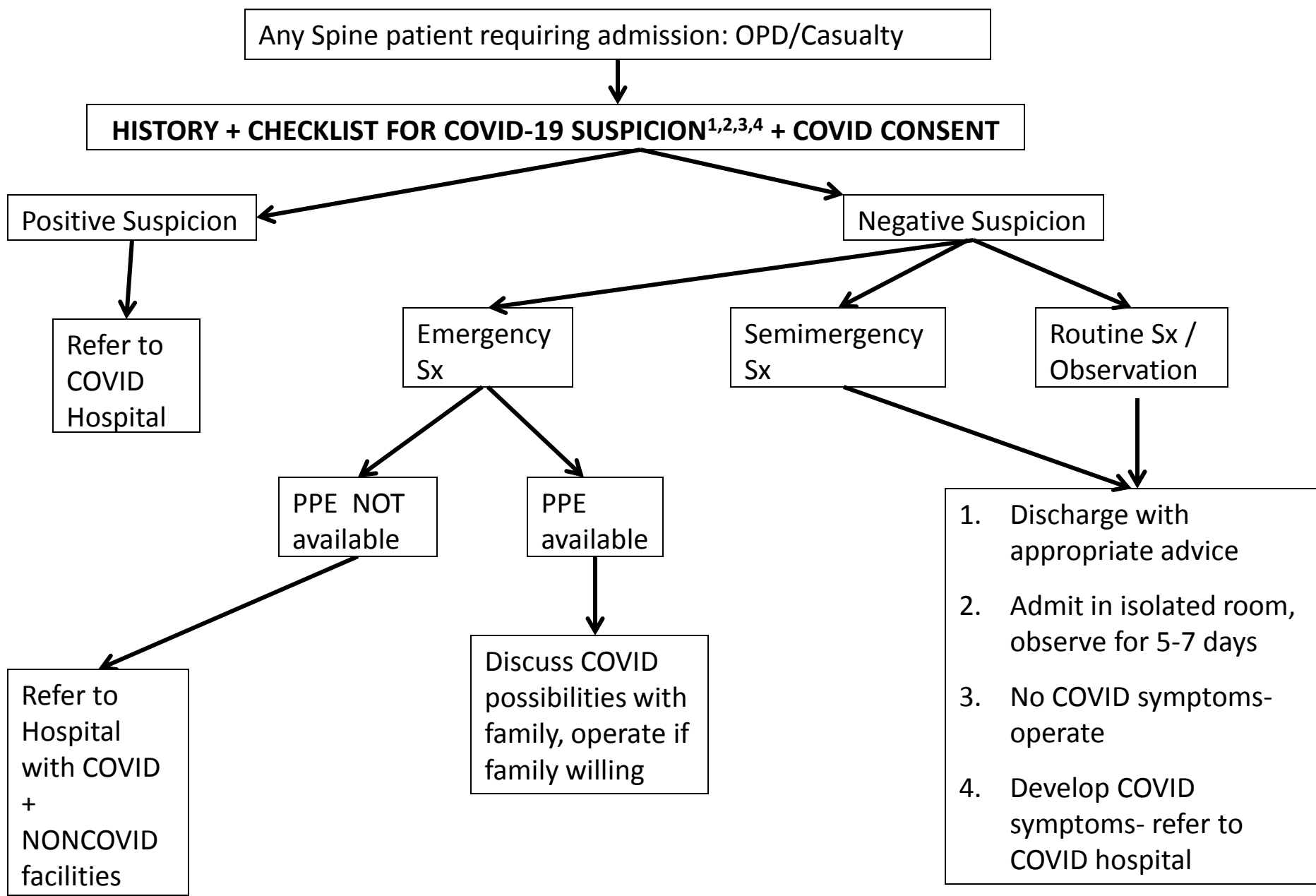
Observe, Operate, shift to Non-COVID ICU/ward

Shift to COVID ward/ICU

Shift to COVID ward/ICU- Sx
WAIT till COVID negative

Observe, Operate, shift to Non-COVID ICU/ward

SPINE PATIENT ADMISSION AND MANAGEMENT FLOWCHART IN NON-COVID HOSPITALS



References

1. Varghese GM , John R, Manesh A, Karthik R, Abraham OC. Clinical management of COVID-19. Indian J Med Res 2020;151(5):401-10.
2. Carey RB. History and Examination Template. In: CMC- Handbook for clinical management of COVID19. Vellore: Christian Medical College, Vellore; 2020.p. 15-18.
3. Abraham OC. Initial evaluation of a severe acute respiratory illness (SARI) case: syndromic approach. In: CMC- Handbook for clinical management of COVID19. Vellore: Christian Medical College, Vellore; 2020.p. 25-27.
4. Mitura K, Myśliwiec P, Rogula W, Solecki M, Furtak JP, Kazanowski M et al. Guidelines for the management of surgical departments in non-uniform hospitals during the COVID-19 pandemic. Pol Przegl Chir 2020 Apr 15;92(2):42-53. doi: 10.5604/01.3001.0014.1039.